

Product Guide



www.frommpackaging.ca

PAGE OF CONTENTS

Stretch Wrapping Machines	04
Strapping Machines	09
Protective Packaging	13
Gummed Tape Dispenser	25
Lifecycle Care	27

About Us

The FROMM Group develops, manufactures, markets and maintains a range of high quality packaging solutions. These solutions are both innovative and progressive for demanding customers and industries around the world.

Offering high quality and reliable protection to our customers products our well trained specialists create added value by optimizing the total cost of ownership. Quality awareness, Commitment, Proximity and Sustainability are paramount in the development of our FROMM Solutions

Our Vision

We actively strive, within all our capabilities, to develop and produce better products and services, to offer our customers best quality and security

by FROMM – since 1947



FS335

FROMM | PACKAGING SYSTEMS

Turntable Stretch Wrapping Machine

Customized solution for efficient and effective pallet wrapping.

The FS335 modular construction, carriage upgrades and attractive purchase price offers many expansion options for almost all budgets and user requirements. A wide variety of branded parts, including electronics and motors, optimizes operational reliability and reduces maintenance requirements to a minimum. High Safety and Ease of use is inherent in their design. This makes them an attractive alternative in any purchasing process.

Economic All-Rounder Streamline your packaging with a machine that does it all, efficiently and cost- effectively.

Compact Design

Save on shipping with our easy-to-transport machine. Plus, it's a breeze to fit into tight spaces.

Plug & Play

Skip the hassle! Easy installation means you're up and running in no time.

Minimal Maintenance

Spend less time on upkeep and more time on what matters—your business.

User-Friendly

Our excellent human interface ensures easy operation, even if you have multiple operators.

Customizable

A wide range of options and modular design to adapt to your specific needs.



Technical Features

- Control Panel with LEXAN display Turntable
- Max. load dimensions: 800 x 1200 mm
- Max. load weight: 2000Kg
- Wrapping height (Pallet included): 2200 mm
- Base-frame turntable height: 75 mm
- Automatic load height reading by photocell
- Acceleration / Deacceleration ramps controlled by inverter
- Spool carriage upwards/downwards speeds controlled by inverter
- Emergency mushroom button according to CE regulations
- Mechanical button to re arm the machine according to CE regulations.
- Beeper at cycle start, phase stopping and cycle end

Turntable Stretch Wrapping Machine

Customized solution for efficient and effective pallet wrapping.

FS2000



FROMM | PACKAGING SYSTEMS

FROMM 2000-series Stretch Wrapping machines represent the latest state of the art. With the new 7" Touch Screen not only all operating actions can be performed, but also - 99 individual programs can be set and service information can be viewed. FS2000 offers the most ingenious and efficient functions that enable the user to carry out the entire wrapping process, from start to finish, automatically and remotely. Thus being able to work more efficiently and save significantly on labour time and costs.

In particular, the new revolutionary and patented Air technology option *Æolus™* - film attachment by air - plays an essential role here.

- **High-Efficiency Film Stretching** – Three film carriages with up to 350% power pre-stretch optimize film usage for cost-effective and secure packaging.
- **Smart Customization** – A 7" touch screen allows up to 99 programmable wrapping settings for tailored operations.
- **Flexible Mast Heights** – Five mast options accommodate pallet heights from 0.5m to 3.8m.
- **Enhanced Versatility** – Compatible with various turntables
- **Adaptable for Any Terrain** – Six standard ramps ensure seamless operation across different surfaces.
- **Embedded Floor Frames** – Optional floor installation eliminates the need for ramps.
- **Environmental Adaptability** – Available in cold store and stainless-steel versions for specialized applications.
- **Advanced Functionalities** – Includes film cutting, auto/manual roping, 3-lane banderole wrapping, scale units, printers, photocells, film roll adapters, and remote control options.



The Aeolus Air Technology option

Æolus™
BY FROMM



The *Æolus™* Air technology option

Available on all FROMM FS2000 series film wrapping machines. Includes remote control, automatic cutting of the film at the end of each wrapping cycle and the subsequent attachment of the film end against the package, by air. With this feature, the film no longer has to be attached to the pallet by hand and it is sufficient to position. The wrapping process can then be started remotely (from the fork lift). At the end of each wrapping cycle the film is automatically cut off and attached against the package, by air.



No additional machine guards or other mechanisms are required for this option.

Efficient, Labor and cost saving as well as Health and Safety friendly!

Self-Propelling Robot Stretch Wrapping Machines

FR2000 SERIES

3rd Generation

With the 2000 series, FROMM heralds a new era of its extensive range of wrapping solutions. The self-propelled FR2000 robot wrapping machines are clearly at the forefront of developments within this machine segment.

In addition to a robust frame and a wide range of configuration options, standard components—including the advanced 7" touch screen control panel (OP) mounted on the mast, integrated visual and audible indicators, an ergonomically optimized handlebar, and a high-impact bumper—are designed to enhance operator efficiency and safety, while upholding FROMM's reputation for sustainable engineering, premium build quality, and minimal maintenance requirements.

The most notable new option is the patented and revolutionary **Aeolus™** film attachment system by air.

Bringing automation within reach, without significant investments. Instantly saving time and labour costs.



Available on all FROMM 2000 series film wrapping machines. Includes **remote control, automatic cutting** of the film at the end of each wrapping cycle and the subsequent attaching of the film end against the package, **by air**. With this feature, the film no longer has to be attached to the pallet by hand and it is sufficient to position the robot against the pallet. The wrapping process can then be **started remotely** (from the forklift). At the end of each wrapping cycle, the film is **automatically cut off** and attached against the package, by air. No additional machine guards or other mechanisms are required for this process.

Some of the most interesting Options

- Coreless coils
- Coil holder kit for Net-wrapping
- Manual or automatic film roping
- Film cutting at the end of the wrapping cycle.
- Automatic cutting film strips (3, 4 or 5 strips)
- Remote control Start - stop in 0-position.
- Low temp (-5°C) kit
- Extra batteries, with extra external charger
- Stretch film consumption measuring unit
- Cycle counter
- Choice of various guidance units and wheels for a variety of pallet loads



WATCH VIDEO

Orbital Wrapping Machines

FV350 Series

The FV350 Series **automatic vertical wrapping machines**, with their **High-Speed Twin Film roll** wrapping technology, belong to the FROMM EasyWrap family of wrapping machines. Prepared to fit easily and quickly into any system. Installation, integration and commissioning require no additional preparation or adjustments. Changing film rolls is a breeze.

Their simple, straightforward construction and the use of branded parts, make them extremely durable, reliable, easy to maintain and energy efficient. The FV350 Series have 6 different ring diameters available, from 50 to 250cm (19.7 - 98"). Ideally suited for quickly and efficiently wrapping all kinds of products, in series or single pieces; long simple bundles or irregular products.

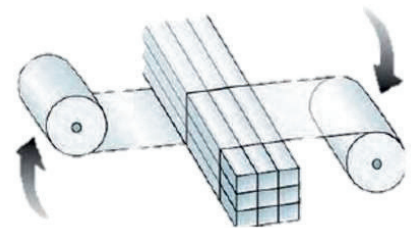
The FV350 Series is produced in the EU, offering you a highly competitive price/performance ratio.

Features and Benefits

- Safe and Sound for carefree and Long-Life operation, Easy to maintain.
- Automatic film clamping (attaching) and cutting (end of cycle) device. The installed PLC makes it fully prepared to be Easily integrated into automatic packaging lines and communicate with other systems.
- A choice of various ring diameters enables you to select an optimal ring/package ratio, for the best and most consistent wrapping result.
- The Twin Film Roll Dispenser allows you to wrap up to 1.8x faster than usual, with single roll technique.
- A well positioned robust touch screen Operating Panel (OP), to Easily manage the settings of your FV350, for the best and a consistent wrapping result. The closed wrapping ring construction offers your employees extra security during the wrapping process.
- Both film roll holders are equipped with a mechanical brake, which allows you to stretch the film as needed for the desired wrapping result.
- Various optional features available, including package presses and guides, roller and belt conveyors, connectors to external systems, electronic photocells for pack detection and many more.

Technical Data

- Ring speed, adjustable between 5 - 350 rpm.
- Required air pressure (film cutting device and presses) 6 Bar.
- Ring diameters : 19.7 / 35 / 49 / 63 / 78 / 98"
- Ring speed inverter and PLC: Fuji and Omron
- Processes film thicknesses: 17 / 20 / 23 / 30 micron
- Handles film roll widths: 39 / 67 / 98"
- Conveyor speed: up to 30 m/min.



WATCH VIDEO

Manual Pallet Wrapper

FM50



The economical and labour friendly alternative to film wrapping by hand.

With the FM50 EasyWrap, hand wrapping of pallets becomes a pleasant and work-friendly activity. It is no longer necessary to crawl or walk around a pallet with the film roll in your hand. This protects the arms and back of your employees.

Tightly wrapped pallets

The FM50 EasyWrap ensures consistently secure and tightly wrapped pallets while optimizing film consumption. Engineered for versatility, it accommodates a wide range of pallet types, sizes, and weights—delivering efficient and rapid wrapping performance.

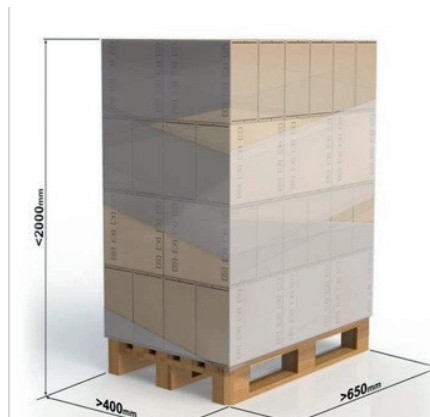
Easy operation

With no electrical components or motor drive. The light design and the simple operation enables everyone to work with it perfectly.

Wrap and save money with thin or pre-stretched films.

The FM50 EasyWrap is® equipped with an adjustable film brake with which thin or even pre-stretched films can be processed. The film carriage is moved up and down via a mechanical transfer, as required. Due to the open construction, roll changes can be carried out quickly and with ease.

In short, EasyWrap® offers many interesting benefits for a particularly attractive price.





Automatic & Semi-Automatic Strapping Machines

Tabletop Strapping machine

- Open Design for Easy Loading and Maintenance
- Powerful DC Motor for Reliable Strapping
- Adjustable Tension for Versatile Applications
- Handles a Variety of Strap Widths 1/4", 3/8", 1/2", 5/8" in.



Features

- Electronic tension control ensures perfect strap tightness every time.
- Protect your products and cut down on wasted strap.
- Adjustable cooling time prevents strap breakage from improper sealing.
- Power Saving Motor This smart motor works only when needed, saving you money and extending the life of your machine.
- The easy-access jog switch simplifies maintenance and keeps your operation running smoothly.
- Ergonomic DC motor design with no clutch, belt and chain means fewer breakdowns and lower maintenance costs.

TECHNICAL SPECIFICATIONS

STRAP WIDTH	1/4", 3/8", 1/2", 5/8" in.
POWER SUPPLY	110V / 60Hz 1-Phase
POWER CONSUMPTION	0.15kW
MACHINE TENSION	0.8KG / 1.76 lbs – 60KG / 132.28 lbs
MACHINE DIMENSION	30.71 in (L) X 21.42 in (W) X 30.71 in (H)
MACHINE WEIGHT	53KG / 116.84 lbs

Automatic Strapping Machines

FRP1100



Features

- **Electronic Outside Tension Control:** Consistent, reliable strap tension for secure packages.
- **Table Sensor:** Automatic operation for a hands-free, seamless workflow.
- **Auto Strap Threading:** Quick and simple setup minimizes downtime.
- **Loop Ejection:** Prevents jams and ensures smooth operation.
- **Second Strap Refeed:** Reduces strap waste and saves you money.
- **Auto Last Strap Ejection:** Prepares the machine for the next cycle, boosting efficiency.
- **No Moving Parts :** Low maintenance design for hassle-free operation and reduced costs.
- **Dispenser Inside Cabinet:** Streamlined design saves valuable workspace.
- **Easy Panel with Rotation:** Effortless control and adjustments for maximum efficiency.
- **Jog Switch For Service & Maintenance:** Easy troubleshooting keeps your machine running at its best.



37 Straps
Per Minute



Simple
Machine Head



Electronic
Tension Control



Loop
Ejection



Auto
Strap Thread



Second
Strap Refeed



Auto Last
Strap Ejection

TECHNICAL SPECIFICATIONS

STRAP WIDTH	1/4", 3/8", 1/2", 5/8" in.
POWER SUPPLY	110 V / 60Hz,1-Phase
POWER CONSUMPTION	0.60KW
MACHINE TENSION	5 KG / 11 lbs – 65KG / 143 lbs



Automatic Strapping machine with brushless DC motor. The SQ-800 provides better efficiency without compromising the reliability of the legendary RQ-8x. Standard strapping rate is 55 straps/min, even when tension is applied. Advanced electrical technology. Self-lubricating design. Recommended for throughput of 40-50 packages per hour in full industrial environments.

TECHNICAL SPECIFICATIONS

ARCH WIDTH	25" TO 89" / 635 MM - 2260 MM
ARCH HEIGHT	16" to 68" 406 mm to 1600 mm
MIN PACKAGE SIZE	W 80 X 30 mm W 1/8" X 11/8"
CORE	8X8 or 9 X 8 in.
POWER SUPPLY	110V 1 Phase 60 Hz 0.35KW



Automatic Strapping machine with brushless DC motor. At 65 straps per minute. Available in several different arch and strap sizes. SM65, high- speed strapping machine that consumes less power, requires fewer adjustments, and minimal maintenance.

TECHNICAL SPECIFICATIONS

ARCH WIDTH	25" TO 89" / 635 MM - 2260 MM
ARCH HEIGHT	16" to 68" 406 mm to 1600 mm
MIN PACKAGE SIZE	W 70 X 20 mm 2.75" Wide x .75
WEIGHT	160 KG / 352 LBS
TABLE HEIGHT	32.3" - 36.2 " / 820 mm - 920 mm

Standard arch 25" WX20"H **foot pedal included**
Various arch sizes available.

AP1000

ALL-IN-ONE

Another
Smart Solution
by FROMM

AirpadTM
BY FROMM

AP1000 ALL-IN-ONE
4th Generation Universal
Air-cushion System

AP1000 ALL-IN-ONE

4th Generation Universal Air-cushion System

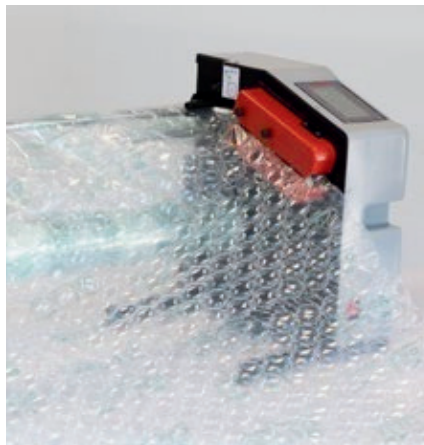
Works with all available materials and patterns

- PE, rPE, Bio, Paper
- Up to 800mm width
- Air-cushions or bubble on demand



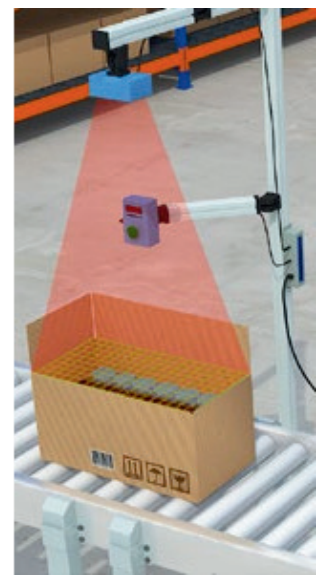
Innovative

- 2-side sealings for a better control and superior sealing strength
- Patented no contact end of the roll sensor
- Touch screen for easy machine control



Technical specifications

- Weight: 11,5 Kg - 31.9 lbs
- Dimensions (hxlxw):
430x390x360 mm
(roll 200) 16.9x15.4x14.2"
- Speed: 20m/min. -
65.6 ft/min.
- Power supply:
110V, 60 Hz
- Item code: 50.2105



Accessories/integration

- Air cushion Separator 50.2130
- SmartFill scanner 50.100250
- Custom designed solutions

Eye catching benefits

- Compact, small footprint
- Easy to integrate
- Easy to operate
- 2 way M2M Communication for optimum uptime
- Excellent working conditions • Superior productivity, up to 20 m/min. - 65.6 ft/min.
- Adjustable filling rate
- Manual or (semi) automatic operation
- Production of calibrated volumes possible in combination with a SmartFill scanner / shooter (option)
- Optional collection of extended usage statistics via an IIoT Gateway

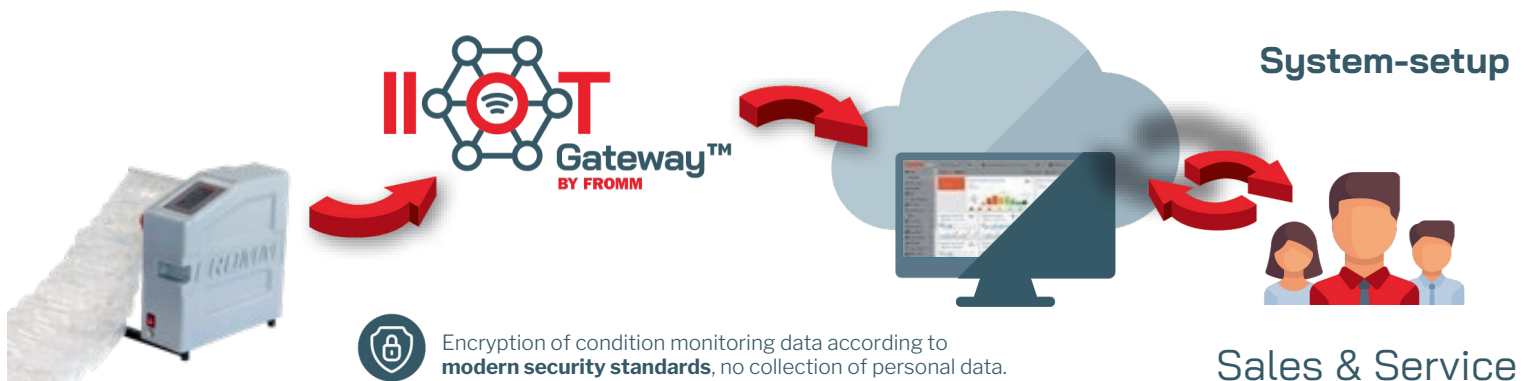
AirpadTM BY FROMM **IIoT Gateway**

Our solution for automated process monitoring

The **IIoT-Gateway**TM seamlessly integrates the **Airpad AP1000** with the cloud, ensuring secure data transmission. Once connected, it continuously monitors and transmits key machine insights, including **operating conditions, performance parameters, consumable usage, and component wear levels**. This real-time data can be visualized and analyzed through **Fromm IIoT**, enabling **proactive maintenance, optimized efficiency, and enhanced machine uptime**. The platform serves as an invaluable tool for maximizing performance and streamlining service management.

Maximizes process continuity by:

- Monitoring machines remotely
- Optimizing preventative maintenance
- Shortening machine service
- Materials usage follow-up





Another
Smart Solution
by FROMM

AirpadTM
BY FROMM

SmartFill

Scanner & Air cushion Separator

1

AIRPAD Scanner

FROMM's compact void measuring device for optimum void filling

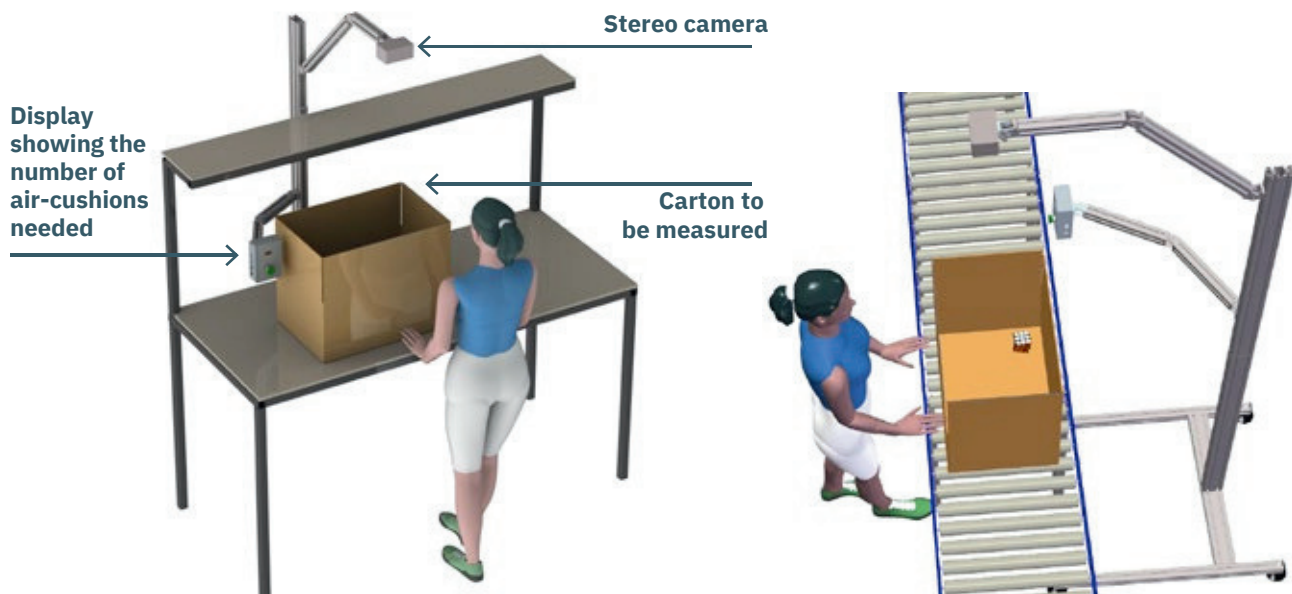
Always the right number of air cushions

- Calculates the optimum number of air cushions for each carton.
- Ensures the best protection for each carton
- Reduces product damages
- No learning curve for new operators to pack with the best protection
- In combination with the Separator for improved productivity

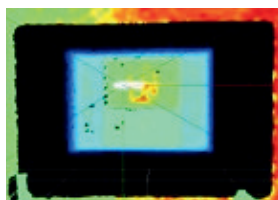
Technical specifications

- Power supply: 90 - 240 V, 50 / 60 Hz
- Communication port: RJ485
- Connectors: USB – A, 5-pins, 3-pins
- Weight: 3.5 kg | 11.5 Lbs (without options)
- Speed: up to 20 cartons/min
- Carton size up to
600 x 500 x 600 L x W x H (mm) / 24 x 20 x 24 (in)
- Item code: 50.100250

System setup



1.Package is detected by the camera and the volume is scanned



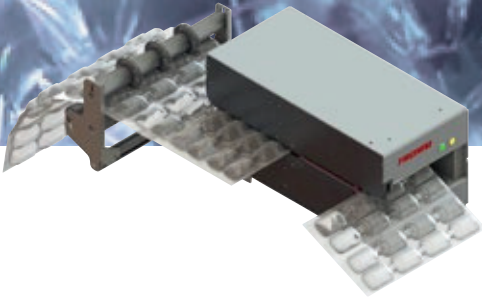
2.Calculate the optimum number of air cushions



3.Digital display for simple and fast process flow

AIRPAD Air cushion Separator

FROMM's compact cutting and dispensing air-cushion device

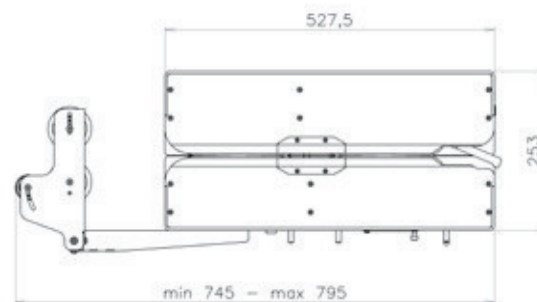
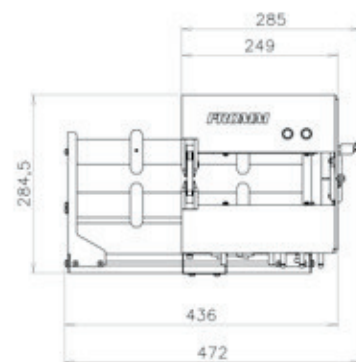


High speed void filling

- Automatic air cushion separation with high speed transport for quick release, low cycle time (300 ms for a 150mm / 6" cushion)
- Dispense pre-separated cushions at arm's length of the operator for optimum working conditions
- Large touch screen operating panel, wireless for easy integration
- 3 operating modes
- Manual with foot pedal
- Semi automatic with pre-defined lengths to choose from the touch panel
- Automatic replenishment of a pre-set number of cushions
- In connection with the AIRPAD Scanner

Technical specifications

- Speed: up to 60 m/min / 200 ft/min
- For films up to 400 mm / 16" wide
- Power supply: 110V 60 Hz
- Communication ports: RJ485, USB 4.0, Coax
- Monitoring and tracking system for easy maintenance
- Weight: 25.5 kg | 82.0 Lbs (without options)
- Item code: 50.2130

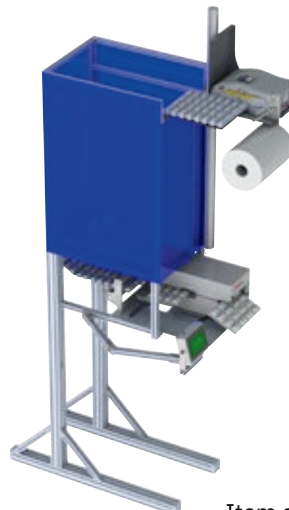


Setup

With Compact bin



With Overhead hopper system



•Item code: 50.2131

PC1000



PaperpadTM
BY FROMM

PC1000

Compact paper system

PC1000



WATCH VIDEO

For safe, quiet and cost effective paper protection.

Compact system, fits everywhere

- Small footprint for both machine and paper
- Very safe, no cutting device
- Silent machine, usable close to operators
- Adjustable paper compression for efficient and cost effective protection
- 5 production modes: Automatic, Demand, Program, Silo and Scan
- Foot pedal can also be used
- Delivers the adequate quantity of paper per box when associated with a Smartfill scanner in option
- Easy collection of comprehensive usage statistics through an IIoT Gateway.



Paperpad Technical specifications

Machine dimensions	L X W X H : 25.6" X 15.8" X 13.7"
Box weight	8 kg
Box length	235 m
Speed	40 m/min, adjustable
Compression ratio	1.40 to 2.00



Paper

Patented crumpling system

- Pre-folded with no glue for improved compacity
- Easy and safe loading
- High yield and high pressure resistance
- Pre-cut paper for easy adjustment to the box
- Easy to flatten for an improved unpacking experience

PC1000 Technical specifications

- 100 % recycled paper, FSC certified
- Pre-formed paper 57#
- 771 ft per bundle
- Pre-cut every 2.75 in
- Paper bundle: 17.6 lbs
- Paper pack: 13.8" x 7.1" x 10.2"
- Item code: : 37.3329



Options

Compact Swivel Paperpad

- Item code: 50.2137



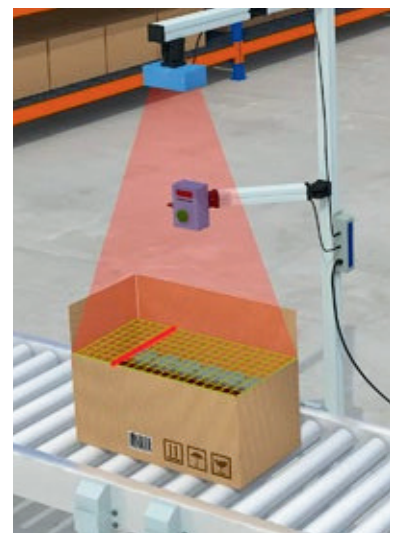
Compact Stand Paperpad

- Item code: 50.2133



Smartfill Scanner

- Item code: 50.100251



PC100

STAND ALONE



Another
Smart Solution
by FROMM

PaperpadTM
BY FROMM

PC100 STAND ALONE
High Speed
Paper Pack Station

PC100 STAND ALONE

High Speed Paper Pack Station



WATCH VIDEO

The Paperpad PC100 system converts 100% recycled FSC certified, recyclable paper into a high-volume crumpled paper at high speed. It ensures optimum void filling and product protection during storage and transport.



Easy to operate

3 functioning modes can be easily set and changed by the operator, via the simple and clear control panel on the front.

Paper loading is extremely simple and safe and can be done in no time.



Table top stand



Movable stand with small paper pack holder

Movable stand with large paper pack holder

Cost efficient

High speed, large volume, ease of use and efficient integration make the PC100 a great solution for superior protection.

Easy to integrate into any pack station

With a choice of multiple adjustable supports for the PC100, integration at pack stations is very easy.

Technical specifications

- Weight: 20 Kg – 44.09 lbs.
- Dimensions: (hxlxw)
317x677x435 mm –
12.6x26.7x17.1"
- Speed: 60m/min. – 197 ft/min.
- Paper separation: Automatic cutting blade
- Power supply: 100–240V,
50/60 Hz
- Item code: 16.4464

Paper qualities

- Paper weight: 50 gr/m2 – 34 lbs.
- Paper type: brown FSC certified 100% recycled, Fanfold
- Length / pack: 500 mtrs. – 1,640 ft.
- Pack width: 375 mm – 14.7" (+/- 1%)
- Weight / pack: 9,4 kg. – 20.7 lbs.

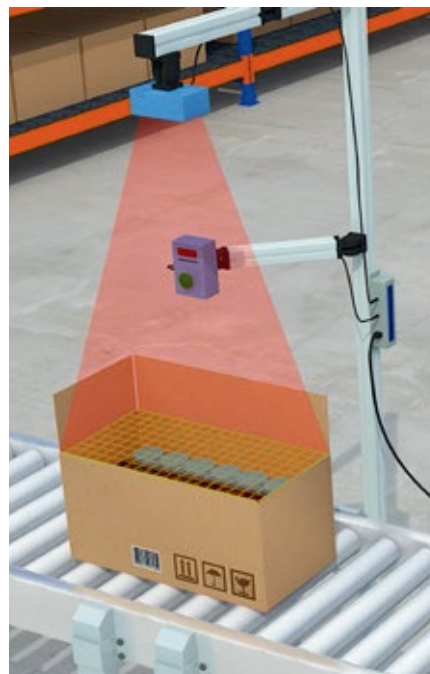
- Paper weight: 70 gr/m2 – 47 lbs.
- Paper type: brown FSC certified 100% recycled, Fanfold
- Length / pack: 400 mtrs. – 1,312 ft.
- Pack width: 375 mm – 14.7" (+/- 1%)
- Weight / pack: 10.5 kg. – 23.1 lbs.

Accessories/integration (Item Code)

- Mobile stand alone support with gas spring (PPC1.0131)
- Mobile stand alone support without gas spring (PPC1.0144)
- Table stand (PPC1.0140)
- 1 Pack paper tray (PPC1.0148)
- 3 Pack paper tray (PPC1.0147)
- USA Power cable (PPC1.3288)
- European power cable (PPC1.3289)

Eye catching benefits

- Compact, small footprint
- Easy to integrate
- Easy to operate
- Productivity and Ergonomics
- Control of the protection and the paper usage with the SmartFill.
- Superior production speed up to 60 mtrs/min. 197 ft/min.
- Adjustable height and output angle



Custom designed solutions

- FROMM is present at all steps of your project, from Identification of needs to installation and full maintenance off the line
- FROMM's end-of-the line expertise ensures reliable solutions, increased productivity and optimum ergonomics



**On-time
delivery**



**Optimum working
conditions**



**Profitable
equipment**



**Flexible
financing**

FROMM | PROTECTING
SOLUTIONS

A 5-STEP PROCESS

- 1 Needs identification**
Audit questionnaire for accurate description of requirements
- 2 Integration approach**
2D-/3D drawings within 2 weeks
Quotation Lead time
- 3 System manufacturing**
- 4 Installation & commissioning**
- 5 Maintenance & Support**

FC-G82

Gummed Paper Tape Dispenser



- Easy to Use
- Compact & Easy to Integrate
- Fast & Efficient
- Clear Control Panel
- Delivers any requested length
- Upto 10x higher adhesive strength than plastic tapes
- Large Water Tank - 2 Ltrs
- Simple Roll Change

Water Activated Tabletop Gummed Paper Tape Dispenser



EFFICIENT & ECO-FRIENDLY PACKAGING SOLUTION

The FC-G82 water activated tape dispenser is an efficient and eco-friendly tool for applying water-activated tape to seal packaging. It's programmable tape length feature reduces waste and provides a tamper-evident seal.

The FC-G82 water activated tape dispenser comes standard with a range of benefits including the ability to program multiple tape lengths. This allows the user to dispense the correct amount of tape needed for each box or application, which reduces the waste of tape and ultimately saves money.

The dispenser is easy to use, and its compact size makes it convenient to integrate into any packing line.

GENERAL INFORMATION

- Tabletop model. Also available in Inox version
- Water tank capacity 2,000 ml (67.63 fl oz)
- Cutting blade stainless steel
- Standard power supply: 85 - 265 V - IPH+N+PE - 50/60 Hz
- Total installed power: 0.12 kW / 6A
- Machine dimensions (lxwxh): 520 x 250 x 290 mm (20.84 x 12.64 x 11.54")



WATCH VIDEO





SCAN HERE
TO REQUEST
SERVICE



Lifecycle care

FROMM's Global Lifecycle Care (LLC) service ensures you receive the maximum uptime and longlife of your equipment and installation at the lowest possible TCO. All offered with the highest level of quality and security.

All FROMM companies offer their local customers the Lifecycle Care program for FROMM machines and strapping tools. From the first consultation, installation and start-up, throughout the entire life cycle – with maintenance, delivery of spare parts and possible upgrades – you can use this program to keep your FROMM products in top condition, limit downtime to the minimum and extend its service life.



Get in Touch
with Us

+1 905 428 3444

Sales@frommpackaging.ca

www.frommpackaging.ca



1738 Orangebrook Crt, Unit 17, Pickering, ON, L1W 3G8

www.frommpackaging.ca | 905-428-3444

